



UNIVERSITY OF MYSORE

YUVARAJA'S COLLEGE (AUTONOMOUS)

(A constituent Autonomous college of the University of Mysore)

Re-Accredited A Grade by NAAC with CGPA of 3.34

College with Potential for Excellence

Mysuru-570 005

Feedback Analysis Report for the year 2019-2020

Importance of Student Feedback: The College aims to offer the best possible environment and learning experience to encourage students to perform to their full potential.

Feedback from students allows the College to evaluate how its service provision is viewed by its most important group of stakeholders, namely its students. Besides providing students with an opportunity to comment on the quality of the teaching and learning environment at the College, feedback ensures that lecturers and Boards of Studies are made aware of problems perceived or encountered by students, and provides an opportunity for the conduct of self-evaluation and revision, where necessary.

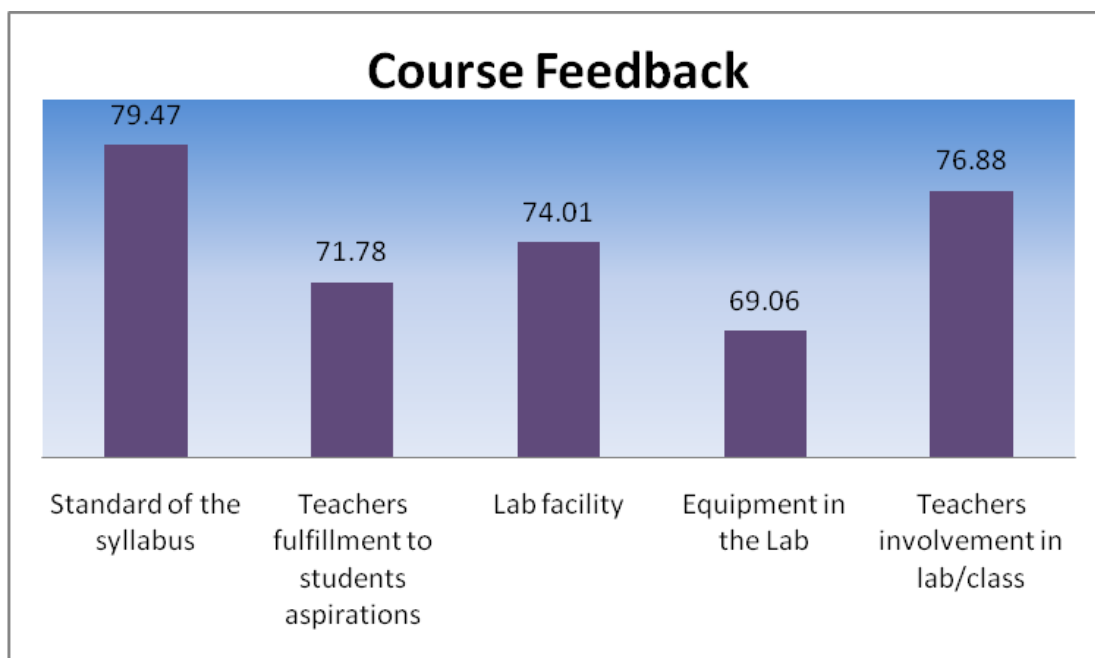
Methodology adopted to obtain feedback from the students

Feedback from the students was obtained on (1) the completeness of the individual study-units of their choice, (2) the facilities available in the college and (3) their experience in the College.

- 1. Feedback about their experience in the College:** The academic excellence of the college is dependent on a number of parameters including

Sl. No	Parameters	Percentage
1	Standard of the syllabus	79.47
2	Teachers fulfillment to students aspirations	71.78
3	Lab facility	74.01
4	Equipment in the Lab	69.06
5	Teachers involvement in lab/class	76.88

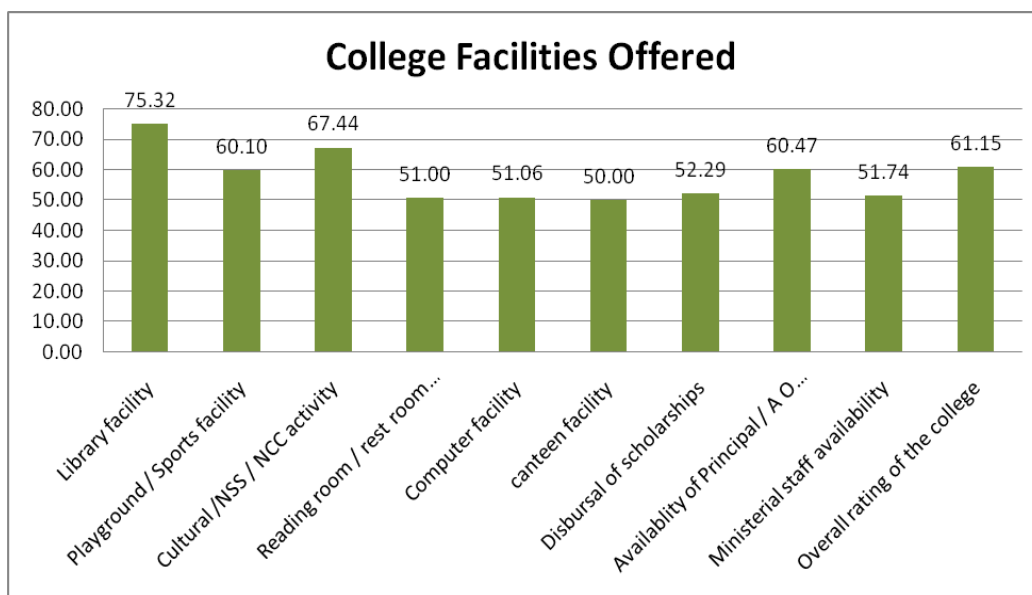
Hence the above parameters were considered and students were asked to give their feedback. The results of the assessment obtained are displayed in the bar graph shown below. From the bar chart it can be observed that 79.47 percent weightage is given to the standard of the syllabus which have been framed keeping in view the progression of the students. Of the total, 76.88 % weightage has been given to the teachers' involvement in lab/class. The steady increase in the enrolment of the students to various courses being offered by the college warrants better lab facility and number of equipments as can be made out from 74.01% and 69.06% respectively.



2. Feedback about the facilities available in the college: Feedback from the students was obtained on the following facilities being offered by the college.

Sl. No	Parameters
1	Library facility
2	Playground / Sports facility
3	Cultural /NSS / NCC activity
4	. Reading room / rest room facility
. 5	. Computer facility
. 6	. Canteen facility
. 7	. Disbursal of scholarships
. 8	. Availability of Principal / A O for students in college
. 9	. Ministerial staff availability
. 10	. Overall rating of the college

The following graph explains the opinion about the facilities being offered in the college on the above mentioned ten parameters.



The highly rated facilities are Library facility (75.32) followed by Cultural /NSS / NCC activity(67.44). The least rated facilities are Canteen facility (50.00) and reading room/rest room facility (51.00). The college council discussed the issues and measures are taken to improve the facilities from the coming academic year

3. Students feedback on teachers:

HIGHLIGHTS OF STUDENTS FEEDBACK ANALYSIS during the year 2019-20

The overall rating of the college against 16 parameters (mentioned below) is 87.72%. Ratings of the individual parameters are shown below.

Sl. No.	Question	Overall rating (%)
1	Preparation for class	86.98
2	Punctuality in the class	87.59
3	Planning and completion of the syllabus on time	87.65
4	Presentation clarity (concept, ideas, explanation, etc.)	86.93
5	Use of support material (Blackboard, Chart or PowerPoint, ICT tools, etc.)	86.12
6	Communication/presentation skill	88.15
7	Encourage students for interaction	86.83
8	Ability to clarify doubts in the class	88.11
9	Providing the summary at the end of the class	86.06
10	Treating all students equally/without prejudice	89.25
11	Study material provided by the teacher	85.01
12	Assessment graded fairly	87.31
13	Methodology or criteria adopted by teachers for assessment of	85.78

	students	
14	Availability or accessibility of teachers beyond the class hours	85.97
15	Possibility of acceptance of the teacher as a role model	85.39
16	Overall assessment of the teacher	87.43
Overall %		86.91

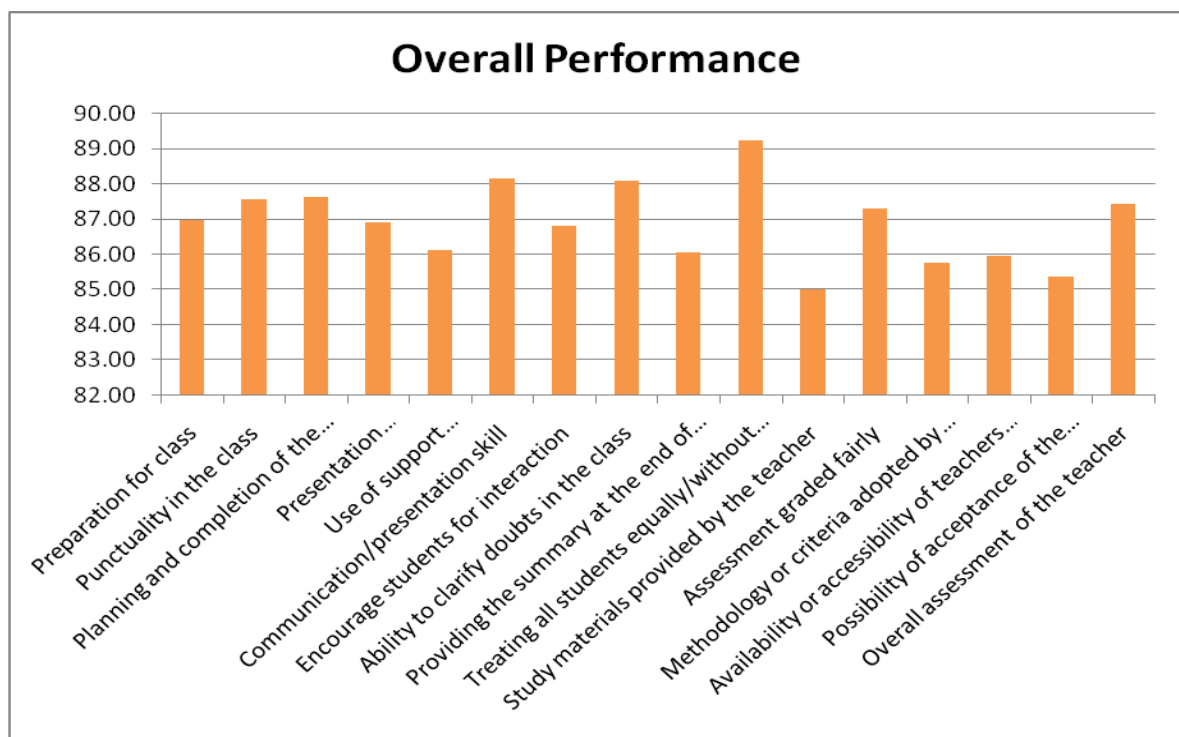
Highly rated parameters

1. Treating all students equally / without prejudice – **89.25%**
2. Communication/presentation skill- **88.15 %**

Least rated parameters

1. Possibility of acceptance of the teacher as a role model – **85.39%**
2. Study materials provided by the teacher – **85.01 %**

Students feedback on Teachers



About the departments:

Overall performance of the departments as explained in the following table.

Sl. No.	Departments	Overall performance(%)
1	Bio Chemistry	88.20
2	Bio Technology	77.58
3	Botany	93.89

4	Chemistry	88.92
5	Computer Science	75.93
6	Electronics	92.45
7	English	95.50
8	Environment Science	95.47
9	Food Science	69.55
10	Geology	92.71
11	Hindi	91.95
12	Kannada	84.23
13	Management Science	86.95
14	Mathematics	91.90
15	Micro biology	92.30
16	Molecular Biology	94.16
17	Physics	81.62
18	Sanskrit	87.68
19	Sericulture	96.91
20	Statistics	82.55
21	Zoology	84.69

Highly rated departments:	
Departments	Overall Performance(%)
Sericulture	96.91
English	95.50
Environmental Science	95.47
Molecular Biology	94.16
Botany	93.89

Department wise Overall performance:	
1. Department of Bio Chemistry	
Overall performance of the Department	88.20%
Highly rated parameters:	
Treating all students equally/without prejudice	90.63
Ability to clarify doubts in the class	89.55

Least rated parameters:	
Encourage students for interaction	86.78
Possibility of acceptance of the teacher as a role model	85.36
2. Department of Bio-Technology	
Overall performance of the Department	77.58%
Highly rated parameters:	
Assessment graded fairly	85.00
Punctuality in the class	83.75
Least rated parameters:	
Preparation for class	72.50
Use of support material (Blackboard, Chart or Power point, ICT tools, etc.)	71.25
3. Department of Botany	
Overall performance of the Department	93.89%
Highly rated parameters:	
Communication/presentation skill	96.43
Preparation for class	96.31
Least rated parameters:	
Possibility of acceptance of the teacher as a role model	91.13
Availability or accessibility of teachers beyond the class hours	89.78
4. Department of Chemistry	
Overall performance of the Department	88.92%
Highly rated parameters:	
Treating all students equally/without prejudice	92.66
Punctuality in the class	91.44
Least rated parameters:	
Possibility of acceptance of the teacher as a role model	86.28
Use of support materials(Blackboard, Chart or Power point, ICT tools, etc.)	85.73
5. Department of Computer Science	
Overall performance of the Department	75.93%
Highly rated parameters:	
Treating all students equally/without prejudice	80.23
Planning and completion of the syllabus on time	78.49
Least rated parameters:	
Possibility of acceptance of the teacher as a role model	72.67
Providing the summary at the end of the class	71.80
6. Department of Electronics	
Overall performance of the Department	92.45%
Highly rated parameters:	
Treating all students equally/without prejudice	100
Planning and completion of the syllabus on time	100
Least rated parameters:	
Communication/presentation skill	87.50

Possibility of acceptance of the teacher as a role model	87.50
7. <u>Department of English</u>	
Overall performance of the Department	95.5%
Highly rated parameters:	
Ability to clarify doubts in the class	98.00
Encourage students for interaction	98.00
Least rated parameters:	
Study materials provided by the teacher	91.00
Use of support materials(Blackboard, Chart or Power point, ICT tools, etc.)	90.00
8. <u>Department of Environmental Science</u>	
Overall performance of the Department	95.47%
Highly rated parameters	
Treating all students equally/without prejudice	98.28
Ability to clarify doubts in the class	96.55
Least rated parameters	
Use of support materials(Blackboard, Chart or Power point, ICT tools, etc.)	93.96
Providing the summary at the end of the class	93.10
9. <u>Department of Food Science & Nutrition</u>	
Overall performance of the Department	69.55%
Highly rated parameters:	
Communication/presentation skill	66.67
Possibility of acceptance of the teacher as a role model	59.52
Least rated parameters:	
Methodology or criteria adopted by teachers for assessment of students	52.86
Providing the summary at the end of the class	52.86
10. <u>Department of Geology</u>	
Overall performance of the Department	92.71%
Highly rated parameters:	
Preparation for class	94.61
Planning and completion of the syllabus on time	94.12
Least rated parameters:	
Assessment graded fairly	91.42
Study materials provided by the teacher	90.93
11. <u>Department of Hindi</u>	
Overall performance of the Department	91.95%
Highly rated parameters:	
Communication/presentation skill	100
Use of support material(Blackboard, Chart or Power point, ICT tools, etc.)	100

Least rated parameters:	
Preparation for class	80.77
Study materials provided by the teacher	76.92
12. Department of Kannada	
Overall performance of the Department	84.23%
Highly rated parameters:	
Communication/presentation skill	88.64
Treating all students equally/without prejudice	88.64
Least rated parameters:	
Study materials provided by the teacher	77.27
Use of support material (Blackboard, Chart or Power point, ICT tools, etc.)	73.48
13. Department of Management Science	
Overall performance of the Department	86.95%
Highly rated parameters:	
Ability to clarify doubts in the class	88.24
Assessment graded fairly	88.24
Least rated parameters:	
Preparation for class	85.29
Use of support materials (Blackboard, Chart or Power point, ICT tools, etc.)	85.29
14. Department of Mathematics	
Overall performance of the Department	91.90%
Highly rated parameters:	
Overall assessment of the teacher	94.48
Communication/presentation skill	93.51
Least rated parameters:	
Use of support material(Blackboard, Chart or Power point, ICT tools, etc.)	88.96
Punctuality in the class	88.31
15. Department of Microbiology	
Overall performance of the Department	92.30%
Highly rated parameters:	
Encourage students for interaction	94.29
Assessment graded fairly	93.86
Least rated parameters:	
Possibility of acceptance of the teacher as a role model	90.79
Availability or accessibility of teachers beyond the class hours	89.91
16. Department of Molecular Biology	
Overall performance of the Department	94.16%
Highly rated parameters:	
Providing the summary at the end of the class	96.30
Ability to clarify doubts in the class	95.37

Least rated parameters:	
Availability or accessibility of teachers beyond the class hours	92.59
Treating all students equally/without prejudice	90.74
17. Department of Physics	
Overall performance of the Department	81.62%
Highly rated parameters:	
Planning and completion of the syllabus on time	86.88
Punctuality in the class	85.11
Least rated parameters:	
Possibility of acceptance of the teacher as a role model	77.66
Encourage students for interaction	76.24
18. Department of Sanskrit	
Overall performance of the Department	87.68 %
Highly rated parameters:	
Treating all students equally/without prejudice	95.59
Providing the summary at the end of the class	95.59
Least rated parameters:	
Overall assessment of the teacher	77.94
Availability or accessibility of teachers beyond the class hours	76.47
19. Department of Sericulture	
Overall performance of the Department	96.91%
Highly rated parameters:	
Study materials provided by the teacher	99.44
Treating all students equally/without prejudice	98.89
Least rated parameters:	
Possibility of acceptance of the teacher as a role model	93.89
Availability or accessibility of teachers beyond the class hours	91.11
20. Department of Statistics	
Overall performance of the Department	82.55%
Highly rated parameters:	
Treating all students equally/without prejudice	88.28
Ability to clarify doubts in the class	85.15
Least rated parameters:	
Possibility of acceptance of the teacher as a role model	78.64
Study materials provided by the teacher	76.04
21. Department of Zoology	
Overall performance of the Department	84.69 %
Highly rated parameters:	
Treating all students equally/without prejudice	91.17
Punctuality in the class	89.29
Least rated parameters:	
Communication/presentation skill	80.46
Possibility of acceptance of the teacher as a role model	78.77

4. Feedback Received from Alumni :

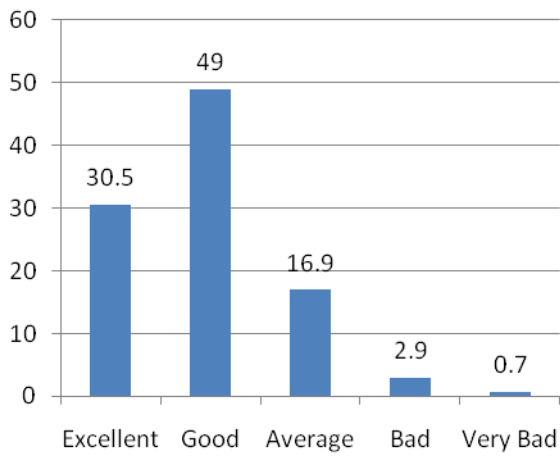
This questionnaire is designed to make a survey of the institutional feedback. The questionnaire designed with 14 parameters are as follows.

Sl.No	Parameters
1	Relevance of course and syllabus to your current job
2	Infrastructure
3	Laboratory
4	Faculty
5	Library
6	Canteen
7	Administrative (Office) staff
8	Hostel Facilities
9	Admission Procedure
10	Fee structure
11	Campus Environment
12	Job and Placement Opportunity
13	Opportunity / Guidance for higher studies
14	Overall performance of the College

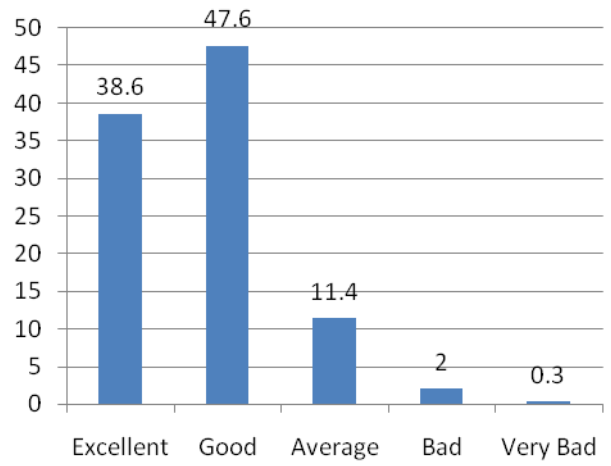
The response of this feedback form consists of five options – Excellent, Good, Average, Bad , Very Bad. The alumnus may select any one option. In total 590 Alumni of the college participated in the survey. Based on their feedback, the college performed the analysis and the results obtained is shown below in the graphical form. The data is presented in percentages.



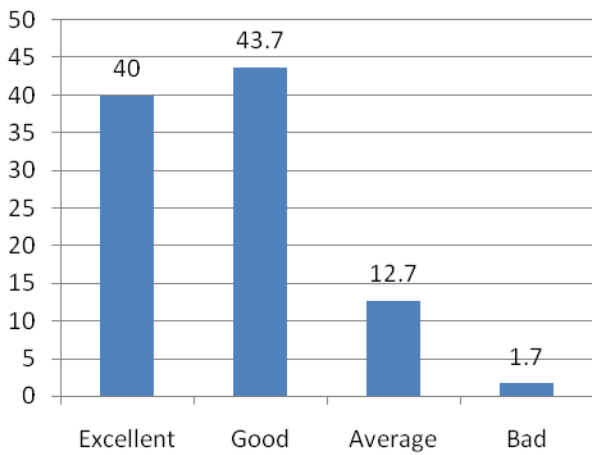
Laboratory



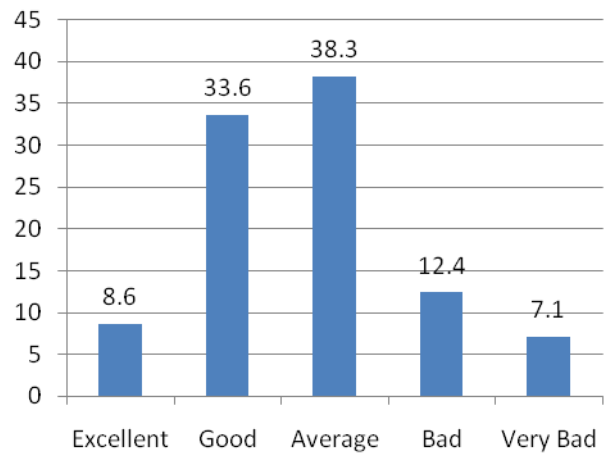
Faculty



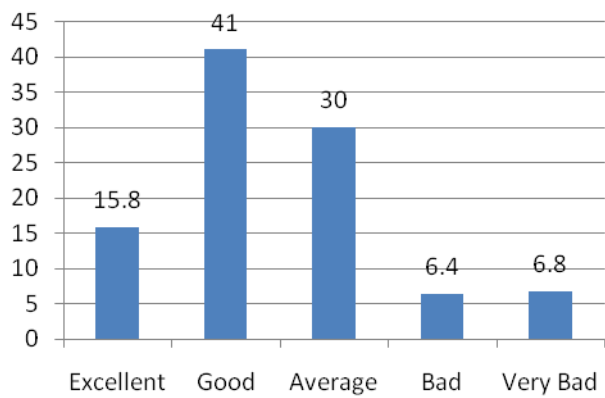
Library



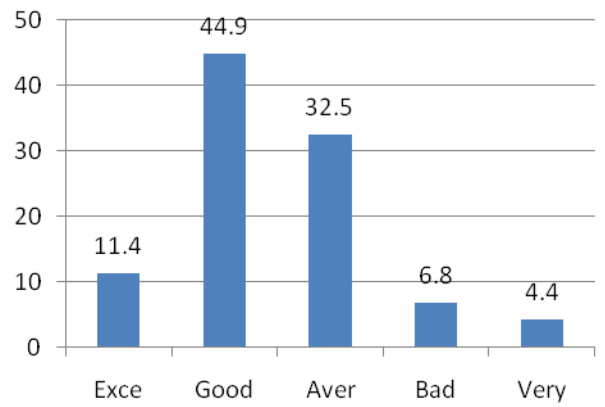
Canteen



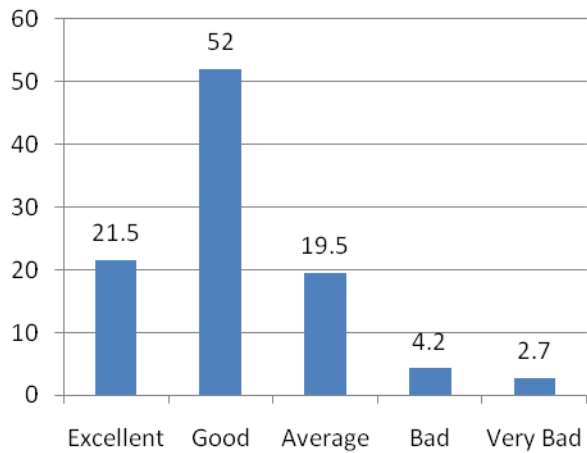
Administrative (Office) staff



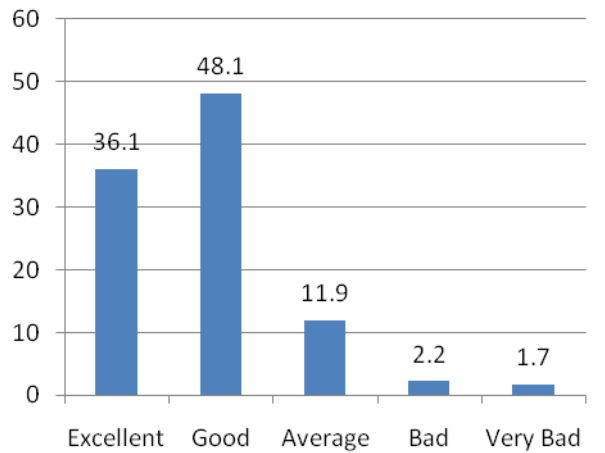
Hostel Facilities

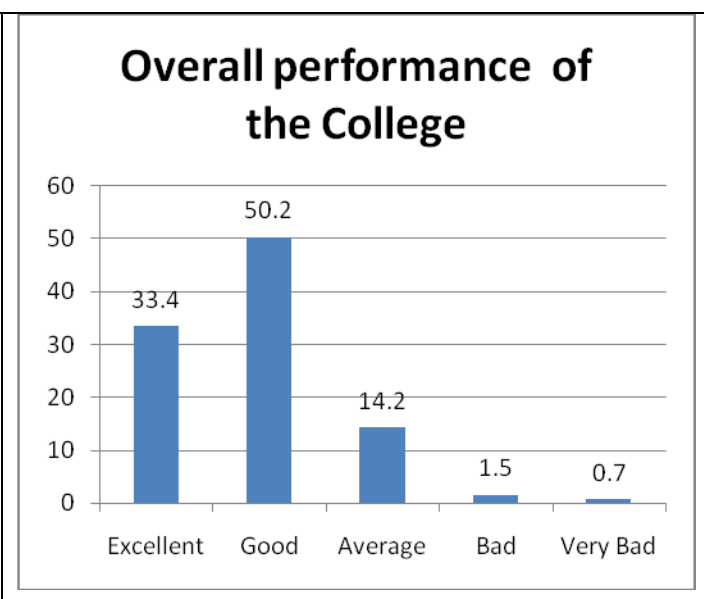
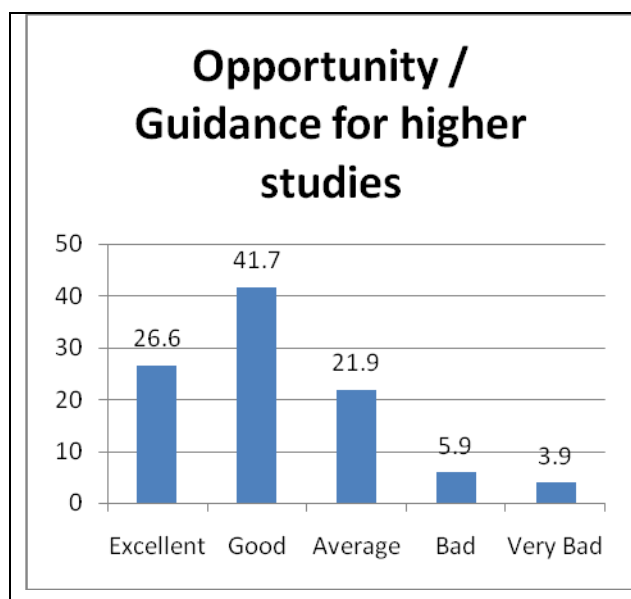
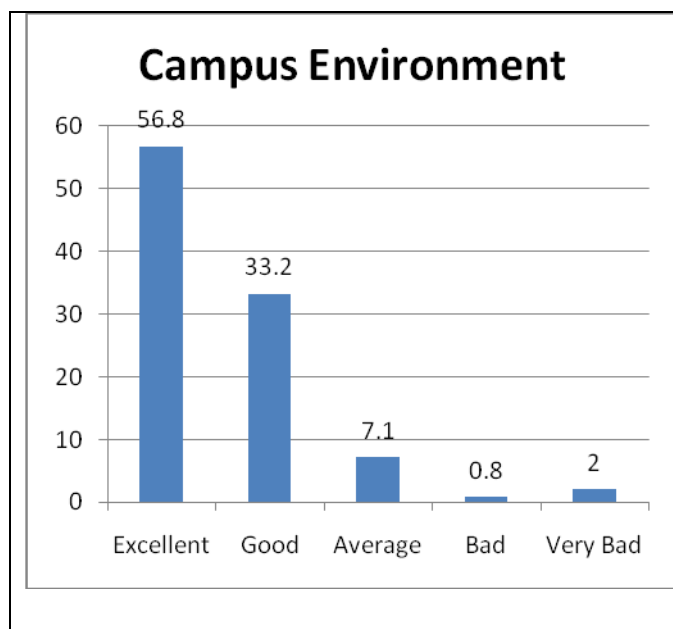


Admission Procedure



Fee structure





For Relevance of course and syllabus to your current job 34.9 % expressed Excellent and 46.8 % expressed Good. For Infrastructure 30.7 % expressed Excellent and 49.8 % expressed Good. For Laboratory 30.5 % expressed Excellent and 49.0 % expressed Good. About faculty performance 38.6 % expressed Excellent and 47.6 % expressed Good. About Library 40.0 % expressed Excellent and 43.7 % expressed Good. About canteen 8.6 % expressed Excellent and 33.6 % expressed Good. The performance of canteen was very bad because only during the Academic year July 2015, we got our own canteen in our campus and many of our Alumnus could not experience it. For Administrative office staff 15.8 % expressed Excellent and 41 % expressed Good. For Hostel facilities 11.4 % expressed Excellent and 44.9 % expressed Good. About Admission Procedure 21.5 % expressed Excellent and 52 % expressed Good.

For Fee structure 36.1 % expressed Excellent and 48.1 % expressed Good.

For Campus environment 56.8 % expressed Excellent and 33.2 % expressed Good.

About Job and placement opportunity 11.5 % expressed Excellent and 34.6 % expressed Good.

For Opportunity /Guidance for higher studies 26.6 % expressed Excellent and 41.7 % expressed Good.

For Overall performance of the college 33.4 % expressed Excellent and 50.20 % expressed Good.

Overall Feedback Analysis

The various graphs present the different views expressed by Alumni with regard to their perception on the quality of the educational institution. Most of the Alumni rated campus environment as excellent. Dissatisfaction expressed by the alumni as made out from some of the ratings of the parameters have been noted and suitable measures will be adopted to address the grievances. Over all 83.60% of the participants are happy with the performance and development of the college and marked good or satisfactory. Job and placement cells need to be strengthened and the college has already taken steps to interact with the industries for inhouse training and better placement opportunities.

4. Feedback from Teachers

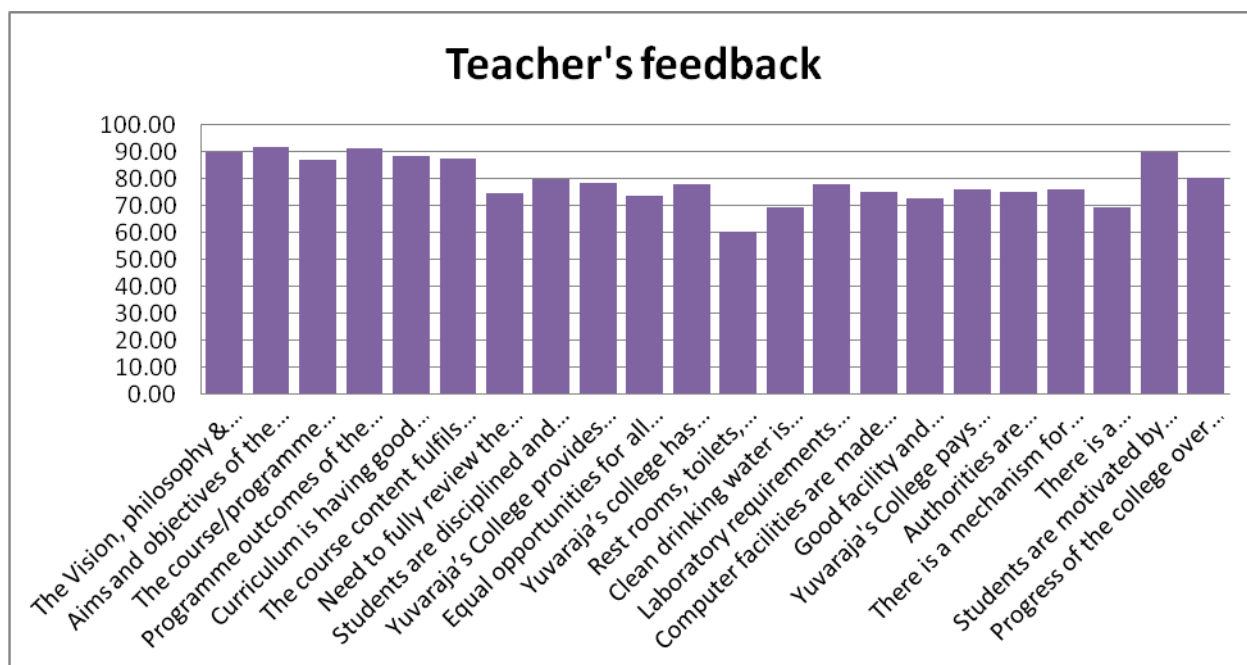
The institute is intended to collect information related to teachers' satisfaction towards the curriculum, teaching, learning, evaluation, infrastructure and administration. The information provided is used as important feedback for quality improvement of the programme of studies and the institution.

The overall rating of the college against 16 parameters (mentioned below) is 87.72%. Ratings of the individual parameters are shown below.

Sl. No	Parameters	Rating(%)
1	The Vision, philosophy & objectives of the Yuvaraja's College is known	90.00
2	Aims and objectives of the syllabus are well defined and clear to teachers and students	91.72
3	The course/programme of studies carries sufficient number of optional papers	86.90
4	Programme outcomes of the syllabus are well-defined	91.38
5	Curriculum has good academic flexibility	88.28
6	The course content fulfils the need of students	87.41
7	Need to fully review the syllabus	74.48
8	Students are disciplined and respect the Staff members	80.00
9	Yuvaraja's College provides opportunities for continuous development of staff	78.62
10	Equal opportunities for all staff is provided	73.45
11	Yuvaraja's college has adequate medical facilities through University of Mysore and is equipped to handle medical and other emergencies	77.93
12	Rest rooms, toilets, laboratory, playground, classrooms are clean	60.52

	and well maintained	
13	Clean drinking water is available	69.57
14	Laboratory requirements including equipments, chemicals and specimens are regularly provided	77.98
15	Computer facilities are made available for ICT based teaching to students	75.04
16	Good facility and encouragement to the teachers for their research	72.59
17	Yuvaraja's College pays attention to conservation of environment and has taken initiative on implementing waste management practices	76.00
18	Authorities are approachable and accessible	74.96
19	There is a mechanism for feedback, review and performance enhancement for the staff	76.03
20	There is a recognition/incentive/ appreciation of the individual work	69.39
21	Students are motivated by teachers in our college	90.00
22	Progress of the college over the years	80.34

The results of the assessment obtained are displayed in the bar graph shown below.



From the bar chart it can be seen that 91.37 percent of the weightage is given to Programme outcomes of the syllabus are well defined , followed by 90 percent of the weightage is given to Students are motivated by teachers in the college . 88.27 percent weightage is given to Curriculum has good academic flexibility. Least weightage is accorded to There is a recognition/incentive/ appreciation of the individual work (69.39%) and Rest rooms, toilets, laboratory, playground, classrooms are clean and well maintained(60.51%)

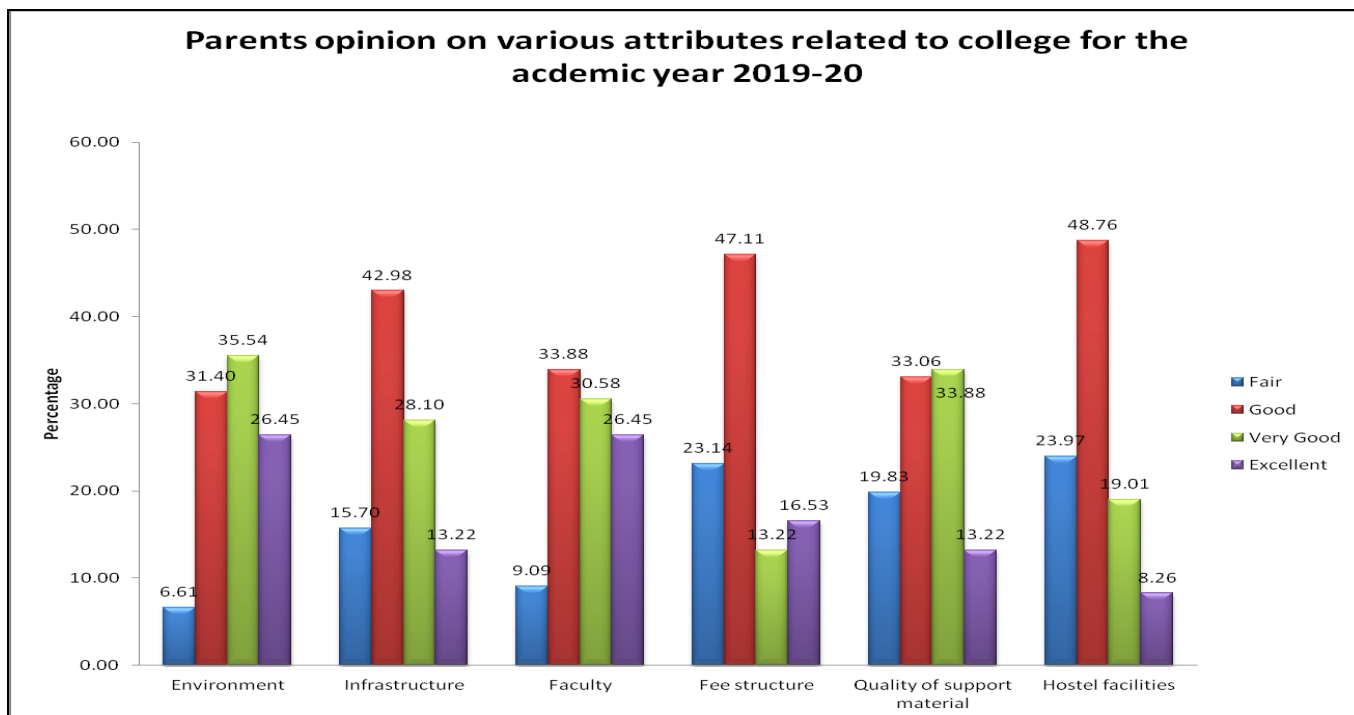
The steady increase in the enrolment of the students to various courses being offered by the college and huge number of teachers working in the college requires that Rest rooms, toilets, laboratory, playground, classrooms are clean and well maintained. The Institute has taken action to improve the basic facilities in the coming years.

5. Feedback from Parents

The institute is intended to collect information related to parents’ satisfaction towards the **Environment, Infrastructure Faculty, Fee structure, Quality of support material and Hostel facilities**. The information provided is used as important feedback for quality improvement of the programme of studies and the institution.

The overall rating of the college against 6 parameters (mentioned above) is explained in the following table. Ratings of the individual parameters are explained.

Year	Attribute	Environment	Infrastructure	Faculty	Fee structure	Quality of support material	Hostel facilities
	Grade scale						
2018-19	Fair	8.15	17.78	6.67	25.93	20.74	23.70
	Good	28.15	45.19	35.56	45.93	36.30	53.33
	Very Good	34.81	26.67	31.85	13.33	31.11	14.81
	Excellent	28.89	10.37	25.93	14.81	11.85	8.15



34.81 percent have the opinion that college environment is very good and 28.89 percent opted as Excellent. Similarly 26.67 percent have the opinion very good and 45.19 percent said good.

35.56 percent are said the faculty is good and 31.85 percent have said the faculty is very good. 45.93 percent voted for fee structure is good and 25.93 percent is opted as fair. 36.30 percent opted for good quality of support material and 31.11 percent said the quality of support material is very good. 53.33 percent said the hostel facility is good and 23.70 percent said the hostel facility is fair. The feedback is presented to the members of the college council and suggestions are taken from the committee members in improving the facilities to be offered to the students.

6. Conclusion:

Thus the feedback given by all the stakeholders was analysed and suitable action was taken so as to satisfy the expectations of students, parents and employers. This further helped us to improvise our curriculum and infrastructure as per the expectations of the stakeholders. Many more measures have been initiated, like the construction of a new block to facilitate more classrooms for both UG and PG sections, construction of restrooms and toilets and repair and maintenance of the existing toilets to name a few. In all, the feedback from all quarters has helped the institution to take pro-active steps to better itself, especially in those areas where it lacks the most. Nevertheless this feedback has given a major boost to the teaching fraternity in the institution to continue the good job and aim for excellence inspite of many hurdles, a major hurdle being the absence of more number of permanent teaching faculty which we are sure will be fulfilled by the University in the near future.